

BLM Montana Dakotas April 29, 2025 Lease Sale

Table of Contents

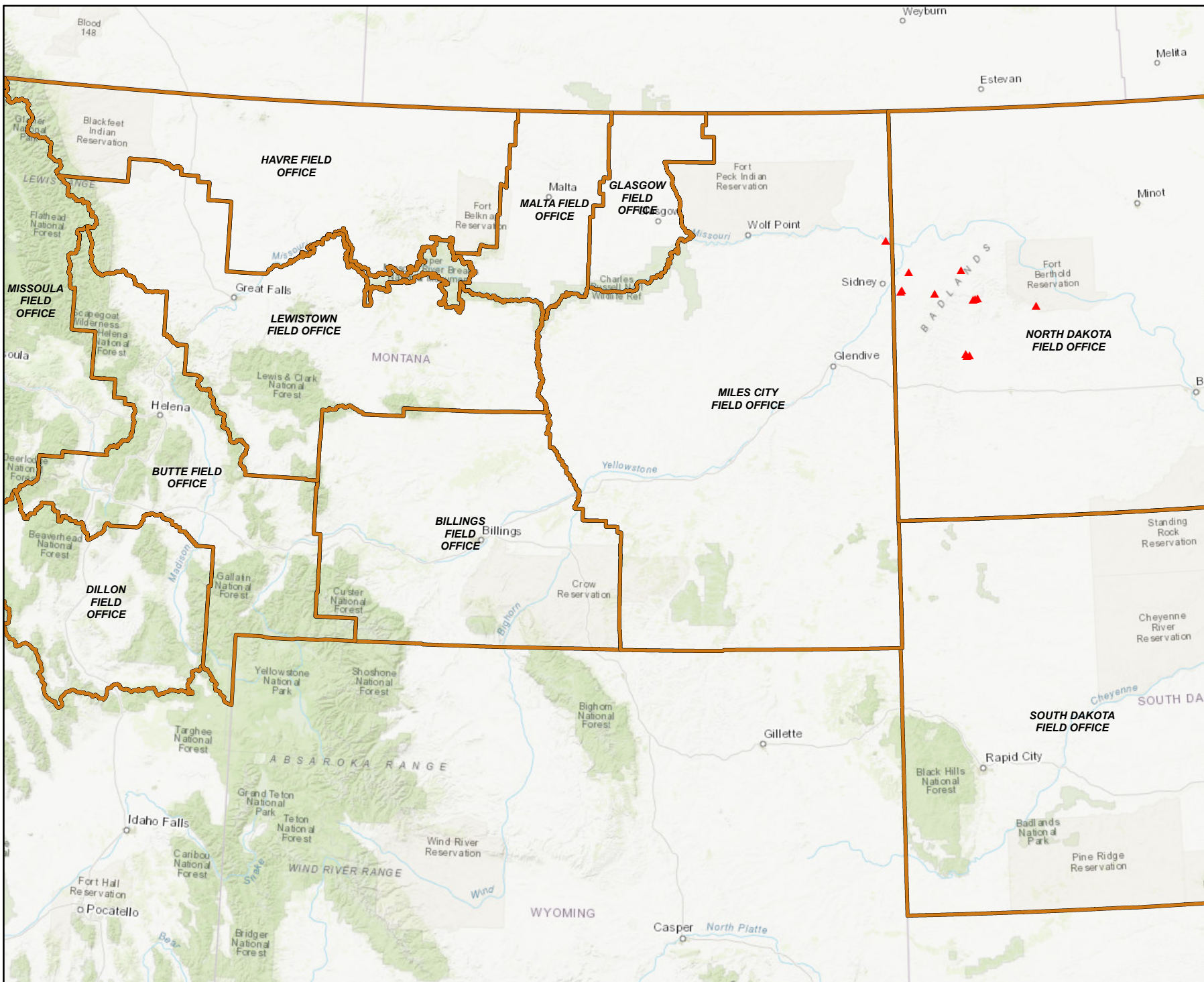
1. Overview Map
2. Vicinity Maps
3. Lease Parcel Maps



Page Navigation instructions: Hyper-links are enabled within this document. Use the following to navigate back to the starting Table of Contents (Select View>Page Navigation>(Make a selection) -or- "Home/Arrow Keys" to return this page)



BLM Montana Dakotas April 29, 2025 Competitive Oil and Gas Lease Sale



Total Parcels: 11
4,266 acres

BLM Surface:
2 acres

Forest Service
Surface:
4,264 acres

Split Estate:
0 acres

U.S. Army Corps of
Engineers Surface:
0 acres

▲ Parcel
Location

▭ BLM Field
Office
Boundary



0 40 Miles

Maps prepared by:
U.S. Department of the
Interior Bureau of Land
Management Montana
Dakotas State Office
5001 Southgate Drive
Billings, MT 59101



NOTE TO MAP USERS
 No warrantee is made by the Bureau of Land Management as to the accuracy, reliability, or completeness of the data layers shown on the map. The official land records should be checked for the current status on any specific tract of land.

Vicinity Map

MILES CITY FIELD OFFICE


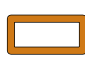
Total Parcels:
 1

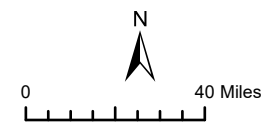
BLM Surface:
 2 acres

Forest Service Surface:
 0 acres

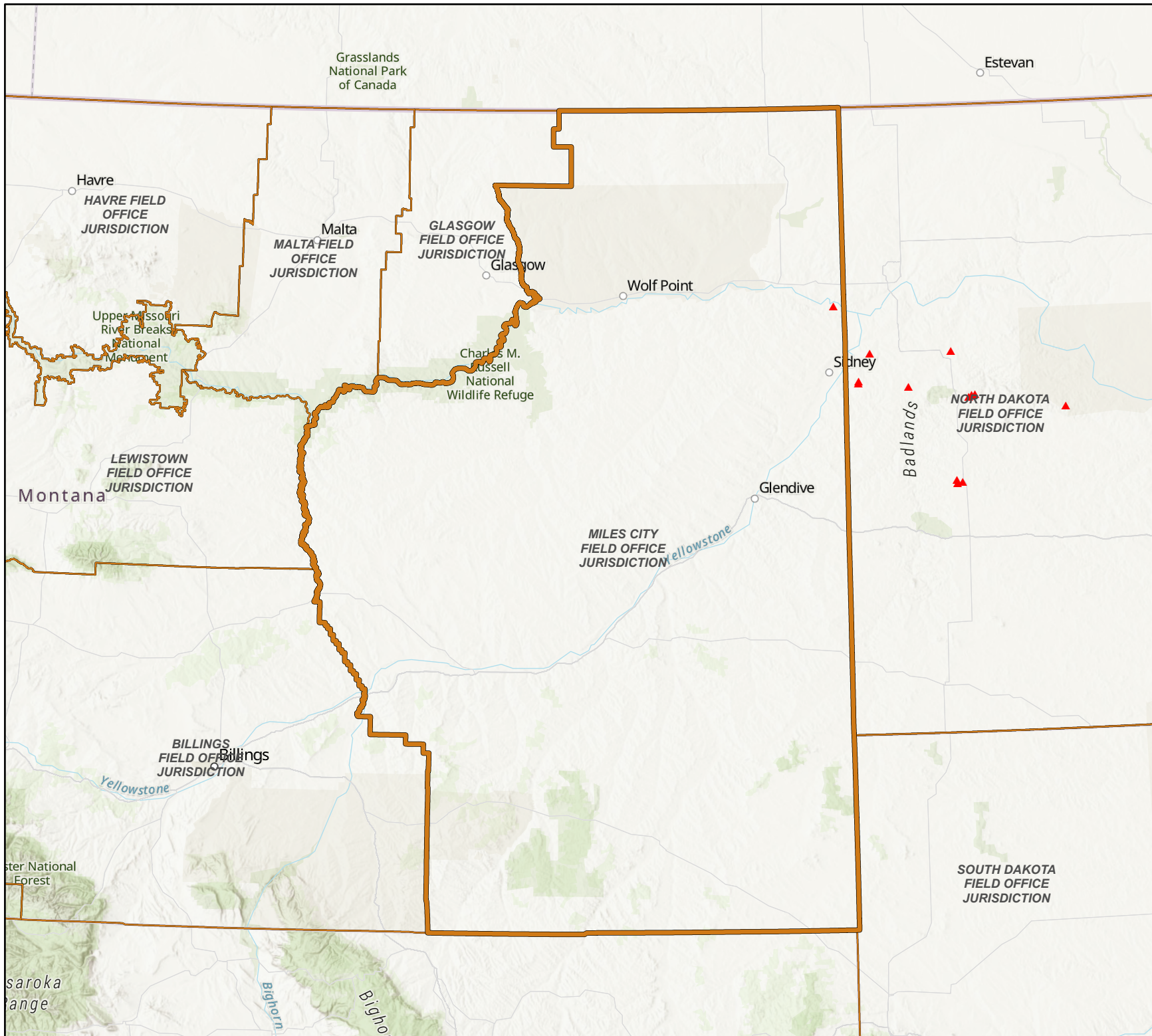
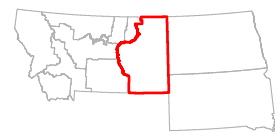
Split Estate:
 0 acres

U.S. Army Corps of Engineers Surface:
 0 acres

-  Parcel Location
-  BLM Field Office Boundary



Map Page Location





NOTE TO MAP USERS
No warrantee is made by the Bureau of Land Management as to the accuracy, reliability, or completeness of the data layers shown on the map. The official land records should be checked for the current status on any specific tract of land.

Vicinity Map

NORTH DAKOTA FIELD OFFICE

Total Parcels:
10

BLM Surface:
0 acres

Forest Service Surface:
4,264 acres

Split Estate:
0 acres

U.S. Army Corps of Engineers Surface:
0 acres

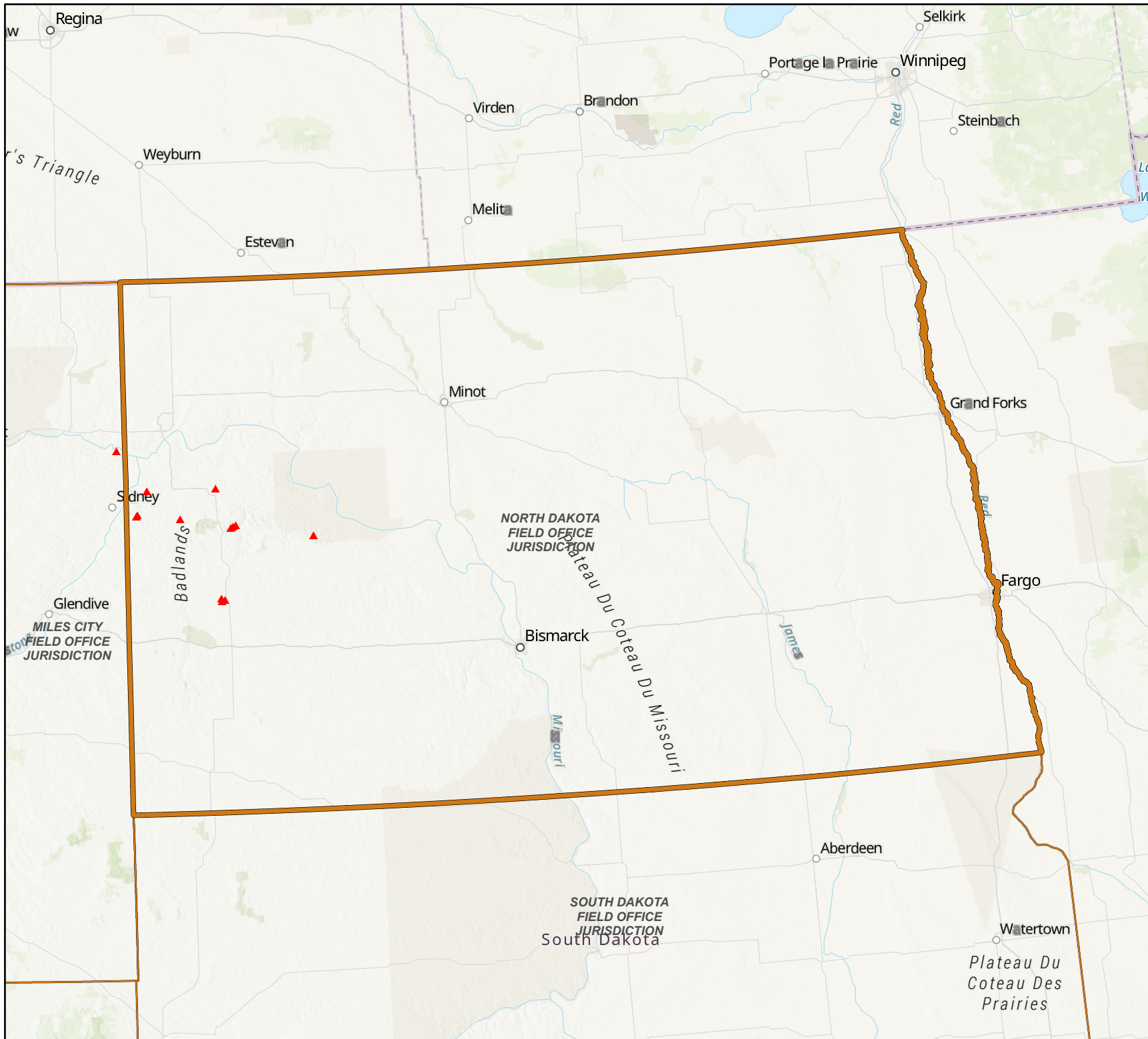
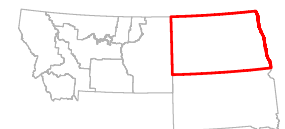
▲ Parcel Location

▭ BLM Field Office Boundary



0 50 Miles

Map Page Location




**Bureau of Land Management
Montana Dakotas Competitive
Oil and Gas Lease Sale
April 29, 2025**






NOTE TO MAP USERS
No warranty is made by the Bureau of Land Management as to the accuracy, reliability, or completeness of the data layers shown on the map. The official land records should be checked for the current status on any specific tract of land.

Miles City Filed Office
Roosevelt County


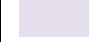
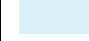

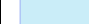
**Parcel Number
MT-2025-04-0413
2.382 Acres**

 **Lease Parcel
MT-2025-04-0413**

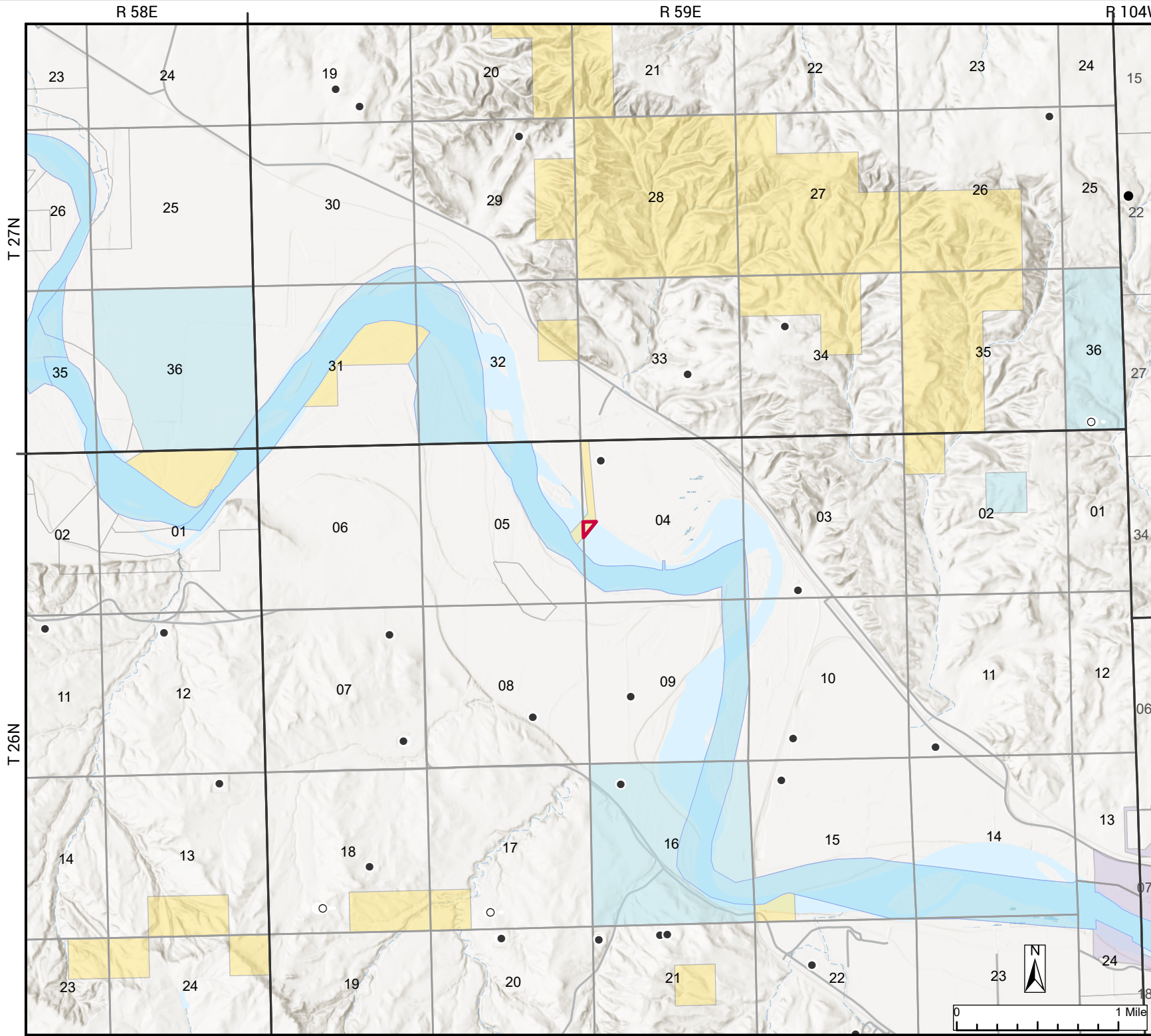
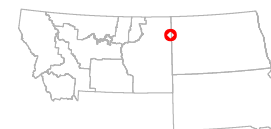
Surface Well

-  Oil, Spudded
-  Oil
-  Oil or Gas

Surface Management

-  BLM
-  National Park Service
-  State Lands
-  Private
-  Water

Map Page Location

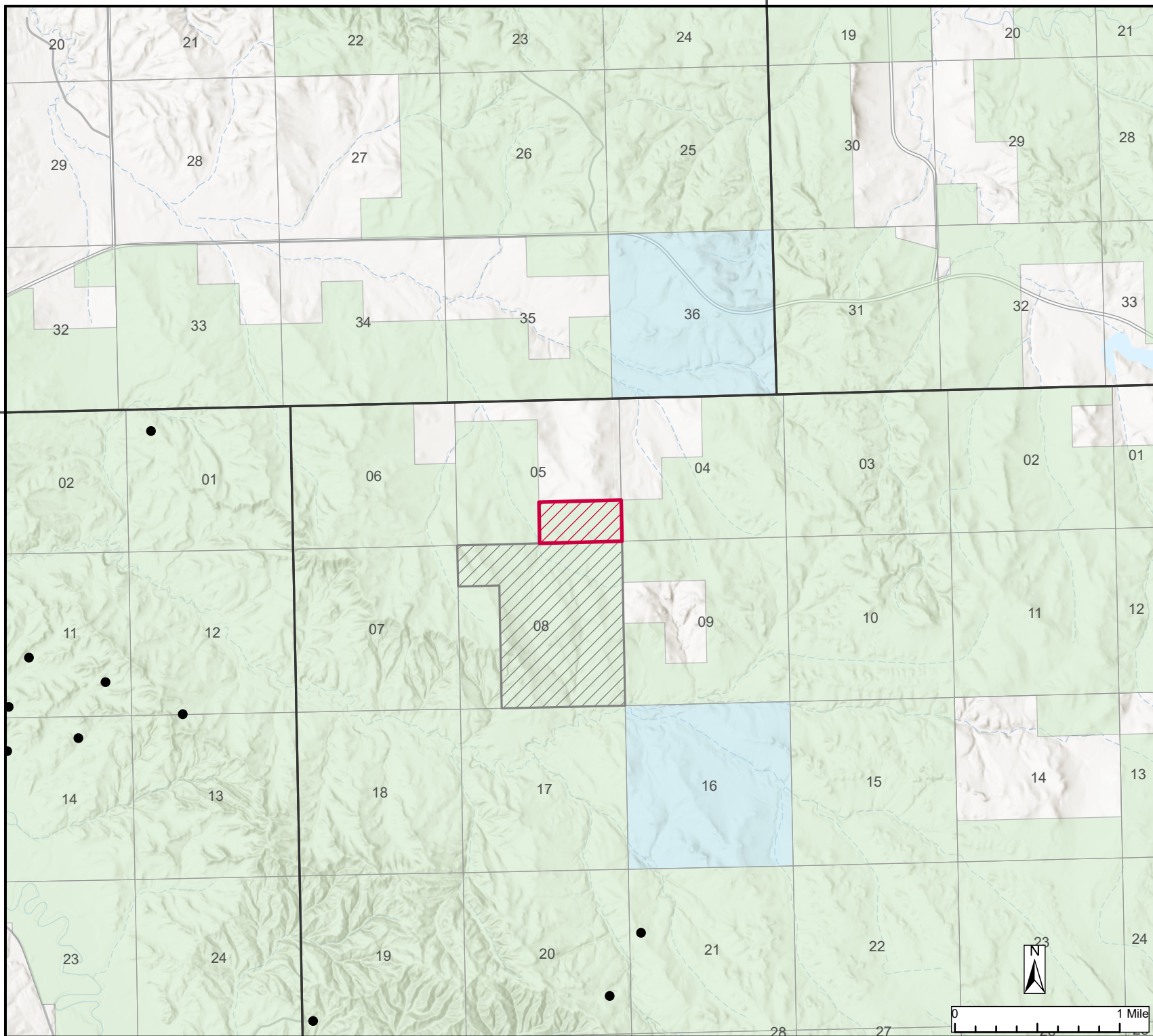


R 104W

R 103W

T 149N

T 148N




**Bureau of Land Management
Montana Dakotas Competitive
Oil and Gas Lease Sale
April 29, 2025**




NOTE TO MAP USERS
No warranty is made by the Bureau of Land Management as to the accuracy, reliability, or completeness of the data layers shown on the map. The official land records should be checked for the current status on any specific tract of land.


**North Dakota Field Office
McKenzie County**

**Parcel Number
ND-2025-04-0302
80 Acres**

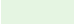
 **Lease Parcel
ND-2025-04-0302**

 **Other Lease Parcel**

Surface Well

 **Oil or Gas**

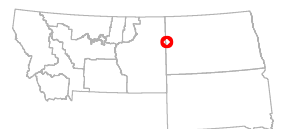
Surface Management

 **US Forest Service**

 **State Lands**

 **Private**

Map Page Location

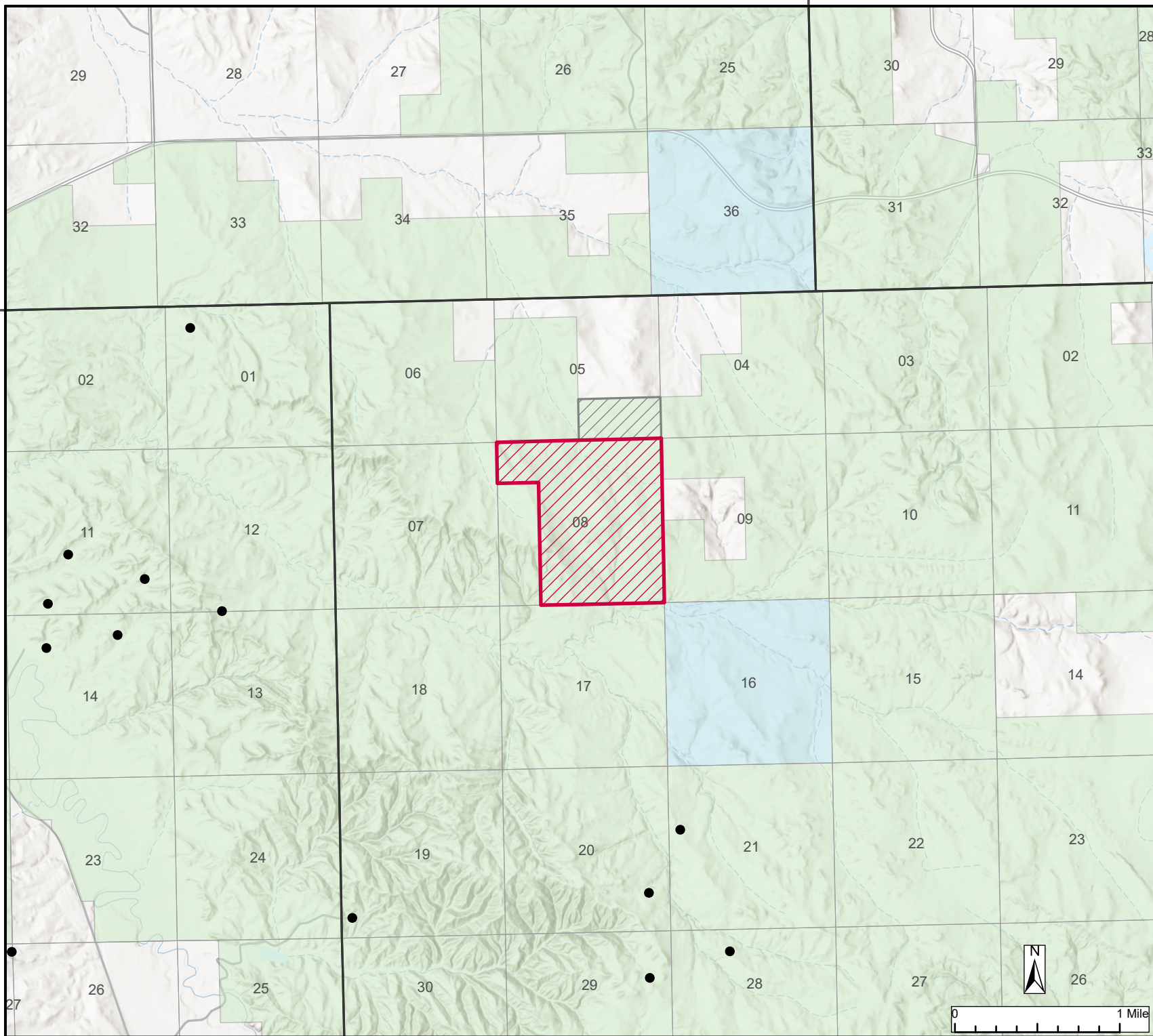


R 104W

R 103W

T 149N

T 148N




**Bureau of Land Management
Montana Dakotas Competitive
Oil and Gas Lease Sale
April 29, 2025**




NOTE TO MAP USERS
No warranty is made by the Bureau of Land Management as to the accuracy, reliability, or completeness of the data layers shown on the map. The official land records should be checked for the current status on any specific tract of land.


**North Dakota Field Office
McKenzie County**

**Parcel Number
ND-2025-04-0303
520 Acres**


 **Lease Parcel
ND-2025-04-0303**

 **Other Lease Parcel**

Surface Well

 **Oil or Gas**

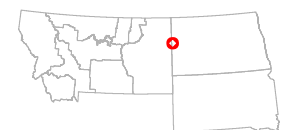
Surface Management

 **US Forest Service**

 **State Lands**

 **Private**

Map Page Location




**Bureau of Land Management
Montana Dakotas Competitive
Oil and Gas Lease Sale
April 29, 2025**



NOTE TO MAP USERS
No warranty is made by the Bureau of Land Management as to the accuracy, reliability, or completeness of the data layers shown on the map. The official land records should be checked for the current status on any specific tract of land.


**North Dakota Field Office
McKenzie County**

**Parcel Number
ND-2025-04-0312
5.74 Acres**


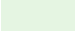
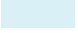


 **Lease Parcel
ND-2025-04-0312**

 **Other Lease Parcel**

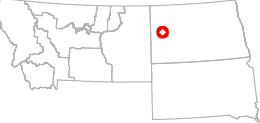
Surface Well

 **Oil or Gas**

Surface Management

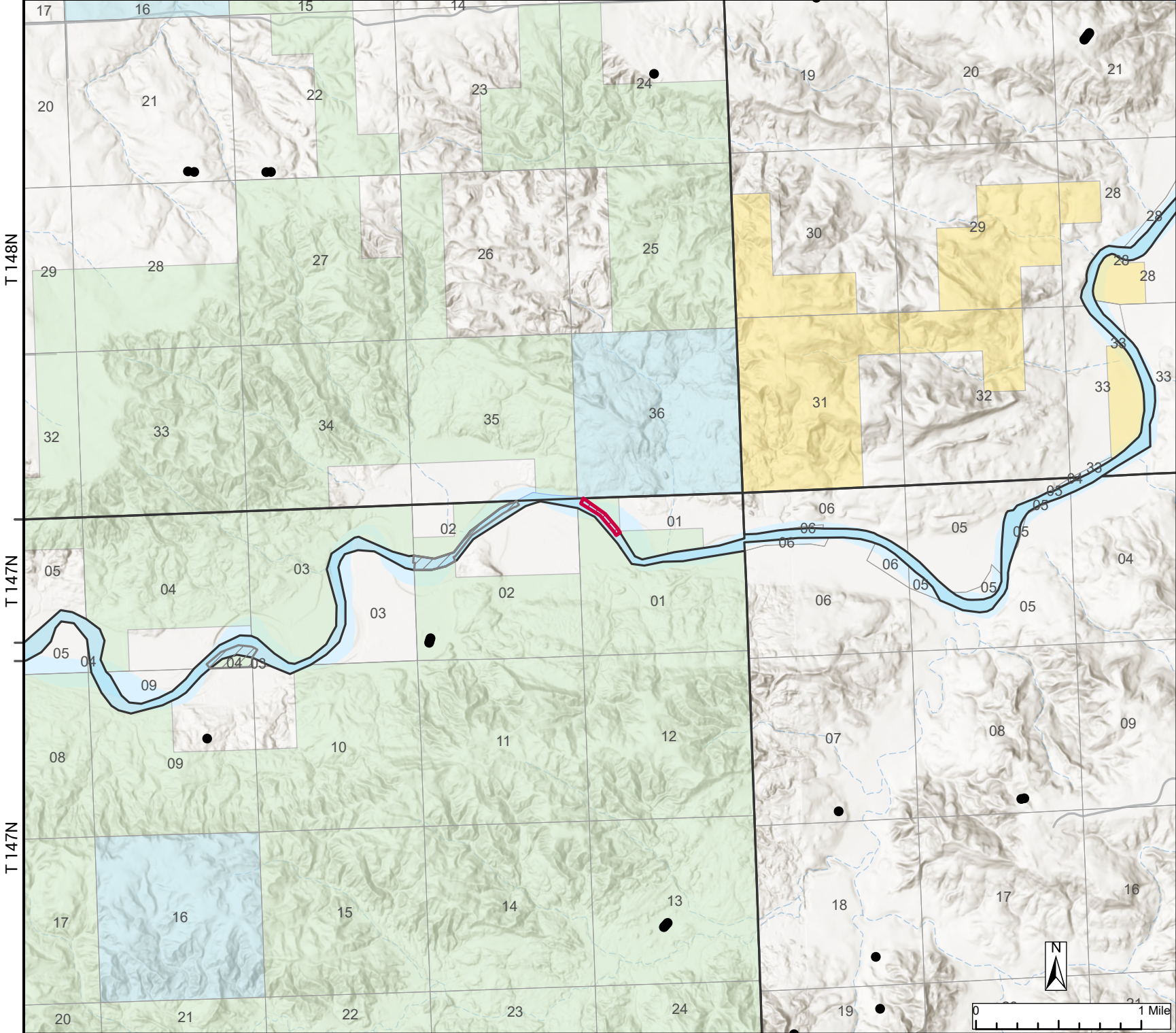
-  **BLM**
-  **US Forest Service**
-  **State Lands**
-  **Private**
-  **Water**

Map Page Location



R 98W

R 97W



R 104W

R 103W

R 102W


**Bureau of Land Management
Montana Dakotas Competitive
Oil and Gas Lease Sale
April 29, 2025**




NOTE TO MAP USERS
No warranty is made by the Bureau of Land Management as to the accuracy, reliability, or completeness of the data layers shown on the map. The official land records should be checked for the current status on any specific tract of land.

**North Dakota Field Office
McKenzie County**

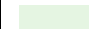
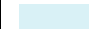

**Parcel Number
ND-2025-04-0719
320 Acres**

 **Lease Parcel
ND-2025-04-0719**

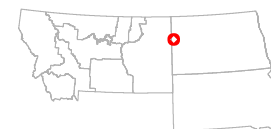
Surface Well

 **Oil or Gas**

Surface Management

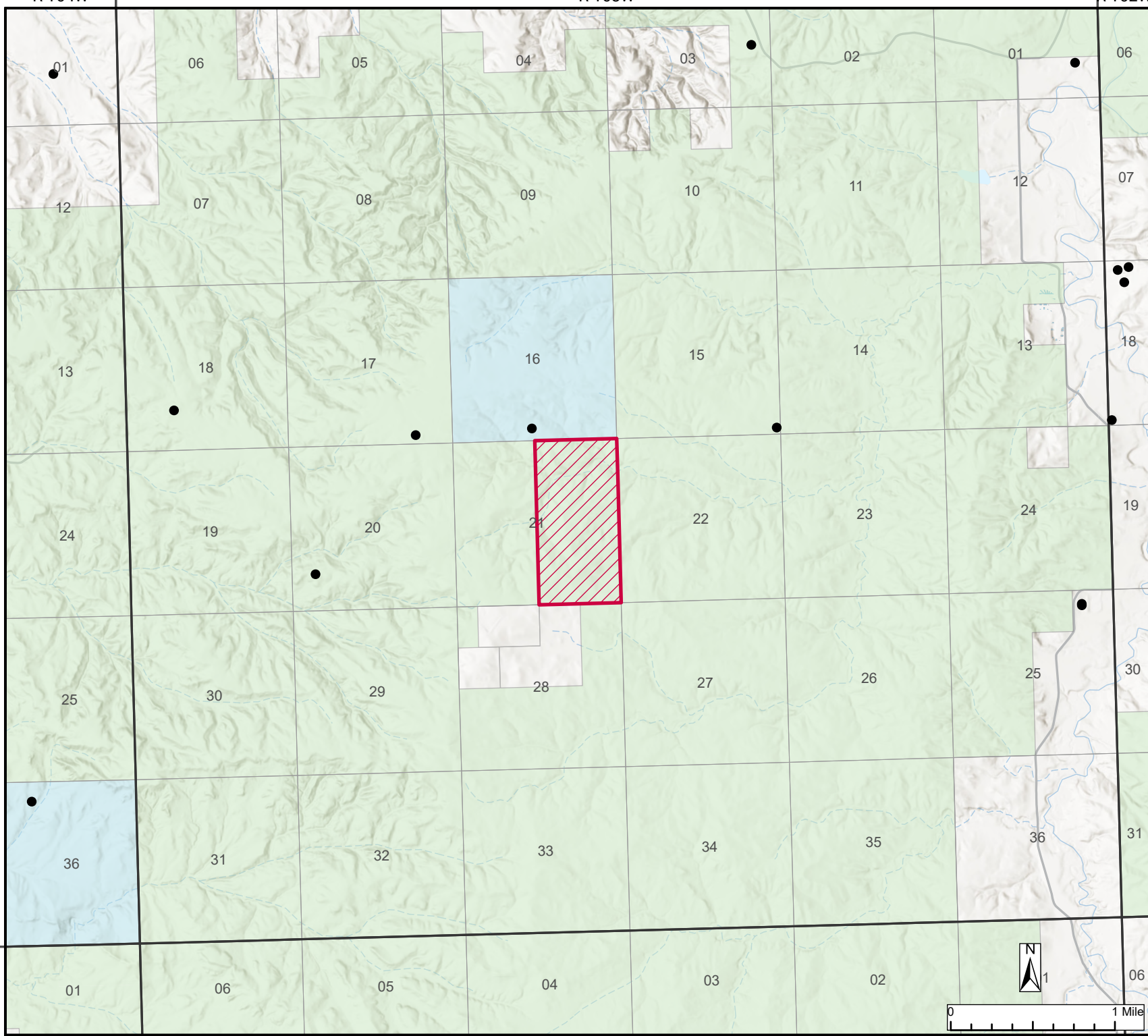
-  US Forest Service
-  State Lands
-  Private

Map Page Location



T 150N

T 149N



R 98W

R 97W


**Bureau of Land Management
Montana Dakotas Competitive
Oil and Gas Lease Sale
April 29, 2025**




NOTE TO MAP USERS
No warranty is made by the Bureau of Land Management as to the accuracy, reliability, or completeness of the data layers shown on the map. The official land records should be checked for the current status on any specific tract of land.


**North Dakota Field Office
McKenzie County**

**Parcel Number
ND-2025-04-0727
18.11 Acres**



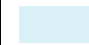

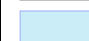
 **Lease Parcel
ND-2025-04-0727**

 **Other Lease Parcel**

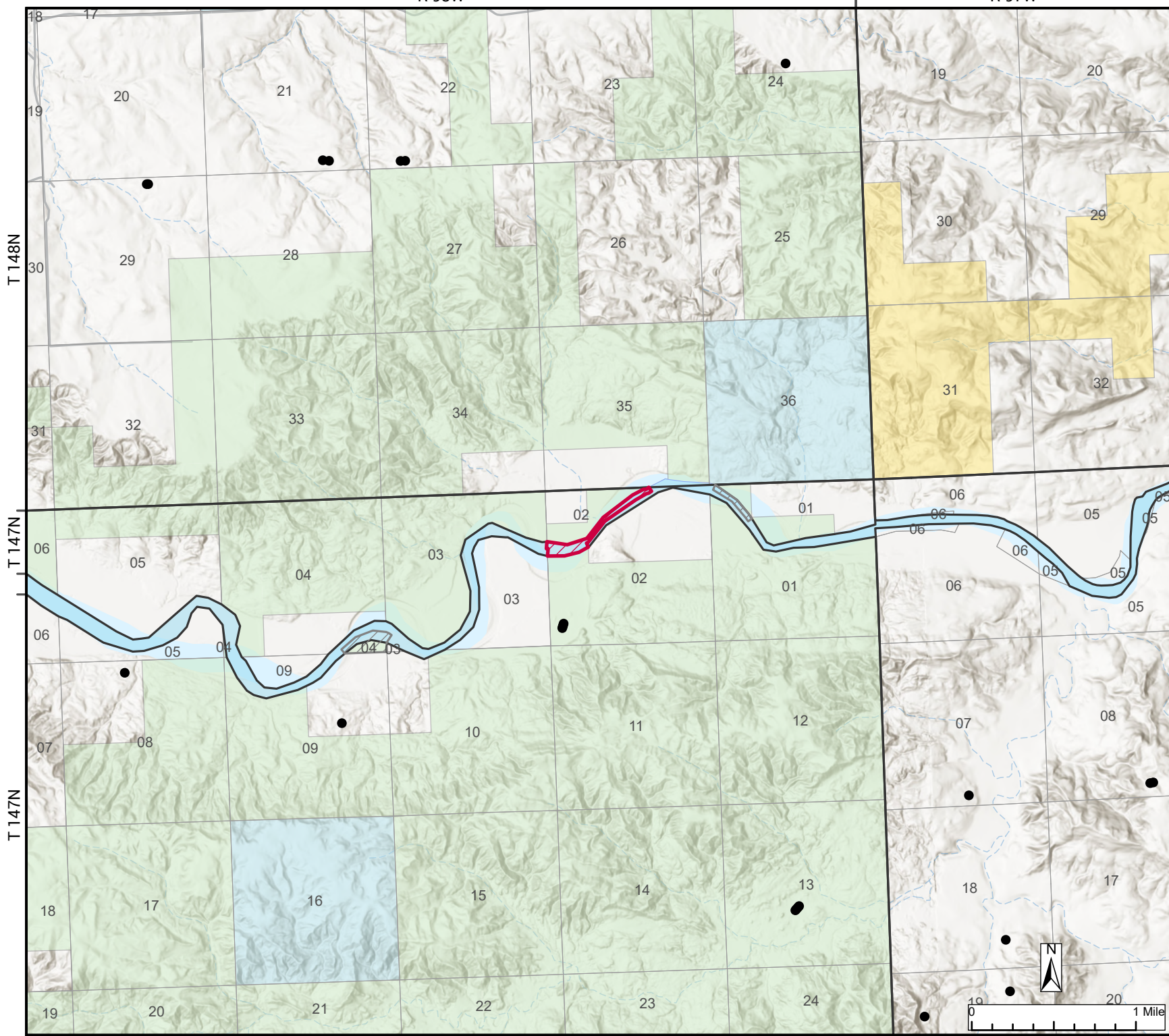
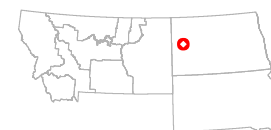
Surface Well

 **Oil or Gas**

Surface Management

-  **BLM**
-  **US Forest Service**
-  **State Lands**
-  **Private**
-  **Water**

Map Page Location



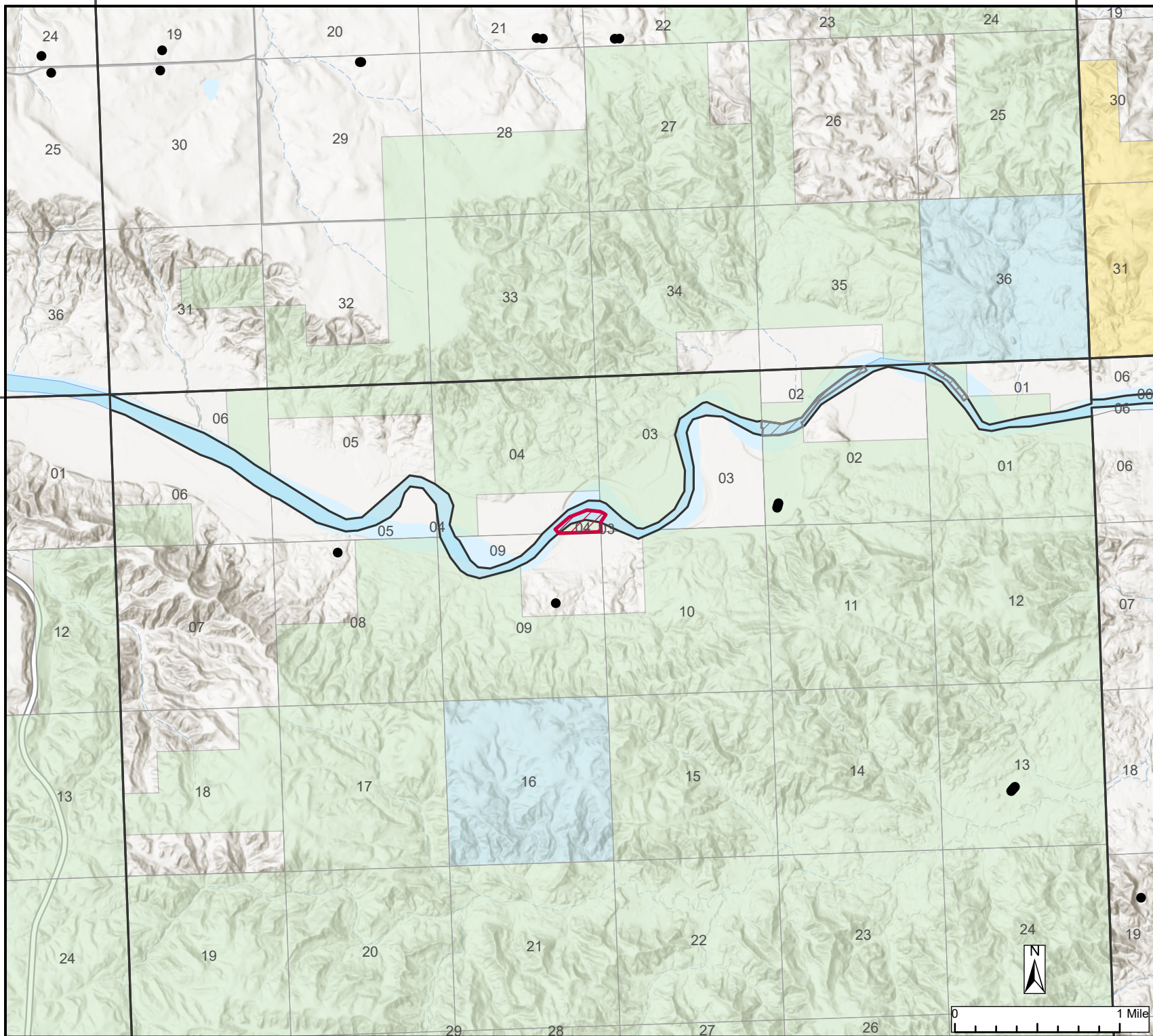
R 99W

R 98W

R 97W

T 148N

T 147N




**Bureau of Land Management
Montana Dakotas Competitive
Oil and Gas Lease Sale
April 29, 2025**




NOTE TO MAP USERS
No warranty is made by the Bureau of Land Management as to the accuracy, reliability, or completeness of the data layers shown on the map. The official land records should be checked for the current status on any specific tract of land.

North Dakota Field Office
McKenzie County

**Parcel Number
ND-2025-04-0728**
18.53 Acres


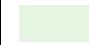

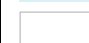
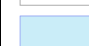
 Lease Parcel
ND-2025-04-0728

 Other Lease Parcel

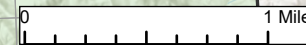
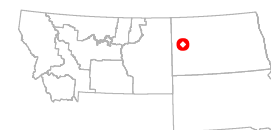
Surface Well

● Oil or Gas

Surface Management

-  BLM
-  US Forest Service
-  State Lands
-  Private
-  Water

Map Page Location



R 101W

R 100W

T 149N

T 148N


**Bureau of Land Management
Montana Dakotas Competitive
Oil and Gas Lease Sale
April 29, 2025**



NOTE TO MAP USERS
No warranty is made by the Bureau of Land Management as to the accuracy, reliability, or completeness of the data layers shown on the map. The official land records should be checked for the current status on any specific tract of land.

**North Dakota Field Office
McKenzie County**


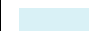
**Parcel Number
ND-2025-04-0736
40 Acres**

 **Lease Parcel
ND-2025-04-0736**

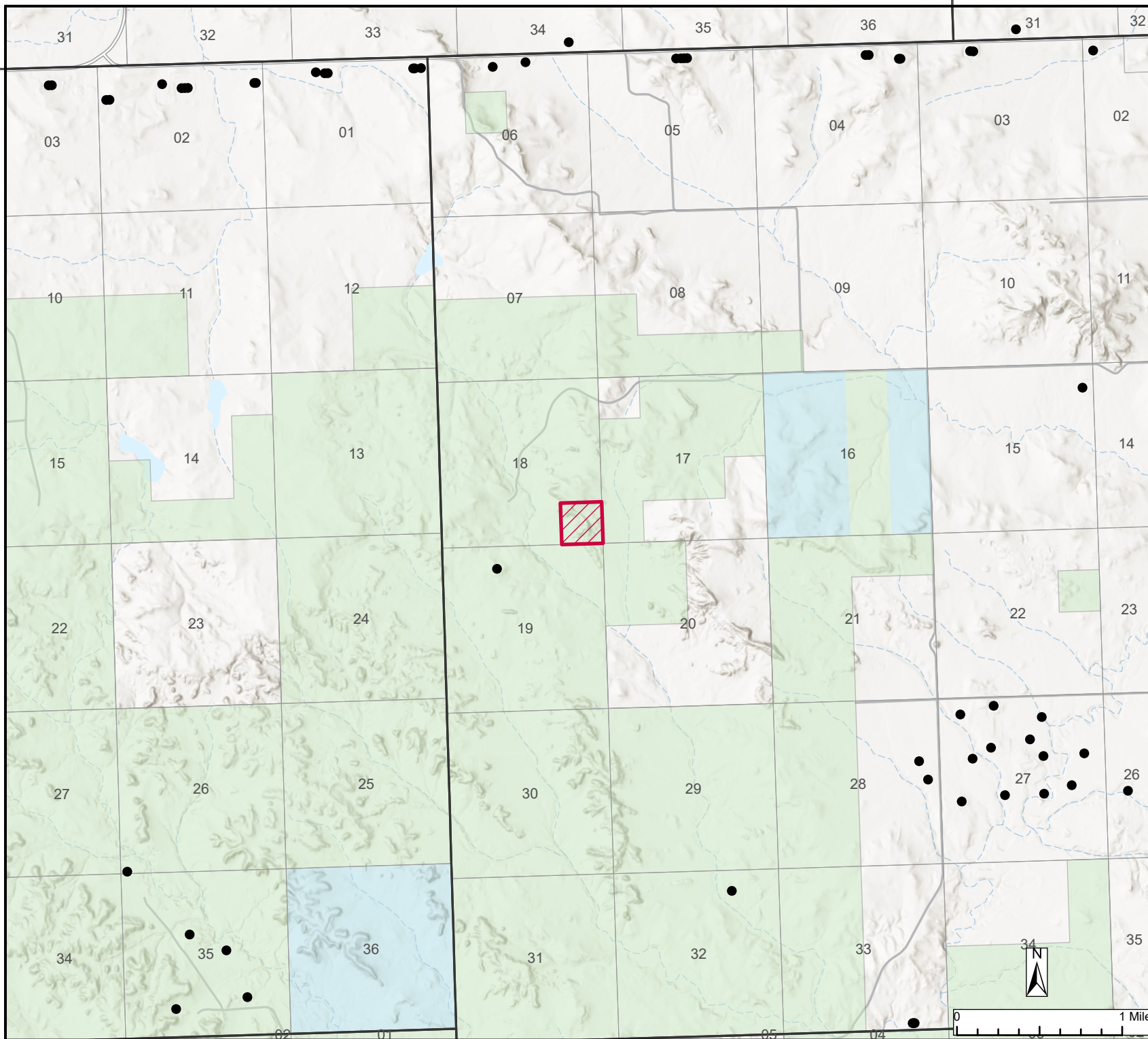
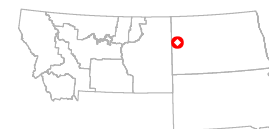
Surface Well

● Oil or Gas

Surface Management

-  US Forest Service
-  State Lands
-  Private

Map Page Location



R 100W

R 99W

R 98W


**Bureau of Land Management
Montana Dakotas Competitive
Oil and Gas Lease Sale
April 29, 2025**




NOTE TO MAP USERS
No warranty is made by the Bureau of Land Management as to the accuracy, reliability, or completeness of the data layers shown on the map. The official land records should be checked for the current status on any specific tract of land.


**North Dakota Field Office
Billings County**

**Parcel Number
ND-2025-04-6816
1419.7 Acres**

 **Lease Parcel
ND-2025-04-6816**

 **Other Lease Parcel**

Surface Well

 **Oil or Gas**

Surface Management

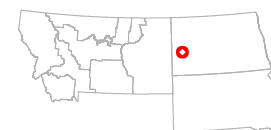
 **US Forest Service**

 **State Lands**

 **State Fish and Wildlife**

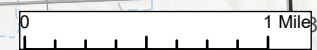
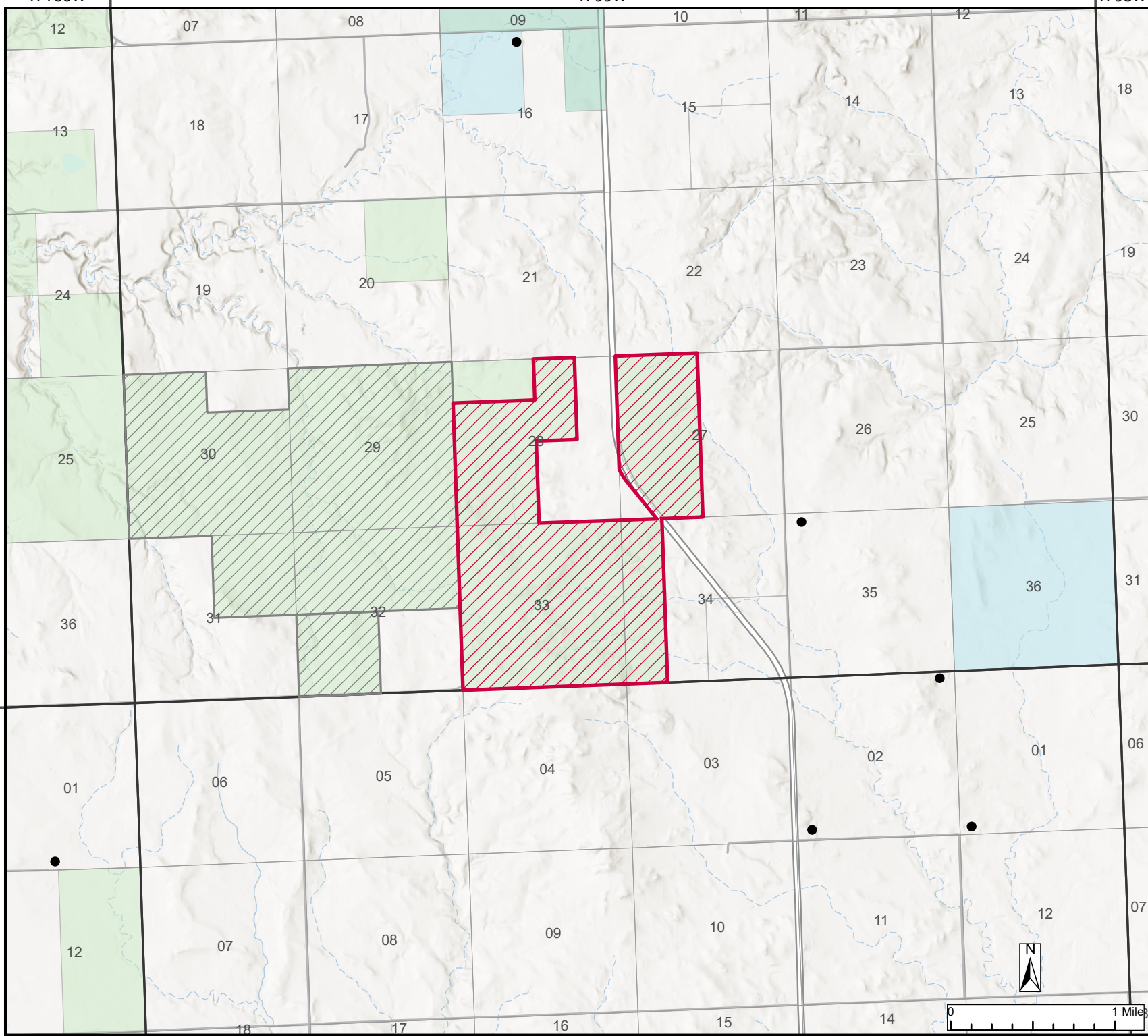
 **Private**

Map Page Location



T 143N

T 142N



R 100W

R 99W


**Bureau of Land Management
Montana Dakotas Competitive
Oil and Gas Lease Sale
April 29, 2025**




NOTE TO MAP USERS
No warranty is made by the Bureau of Land Management as to the accuracy, reliability, or completeness of the data layers shown on the map. The official land records should be checked for the current status on any specific tract of land.


**North Dakota Field Office
Billings County**

**Parcel Number
ND-2025-04-6817
1681.6 Acres**

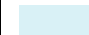


 **Lease Parcel
ND-2025-04-6817**

 **Other Lease Parcel**

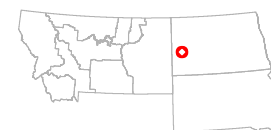
Surface Well

 **Oil or Gas**

Surface Management

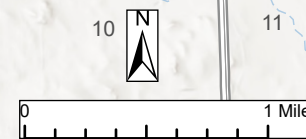
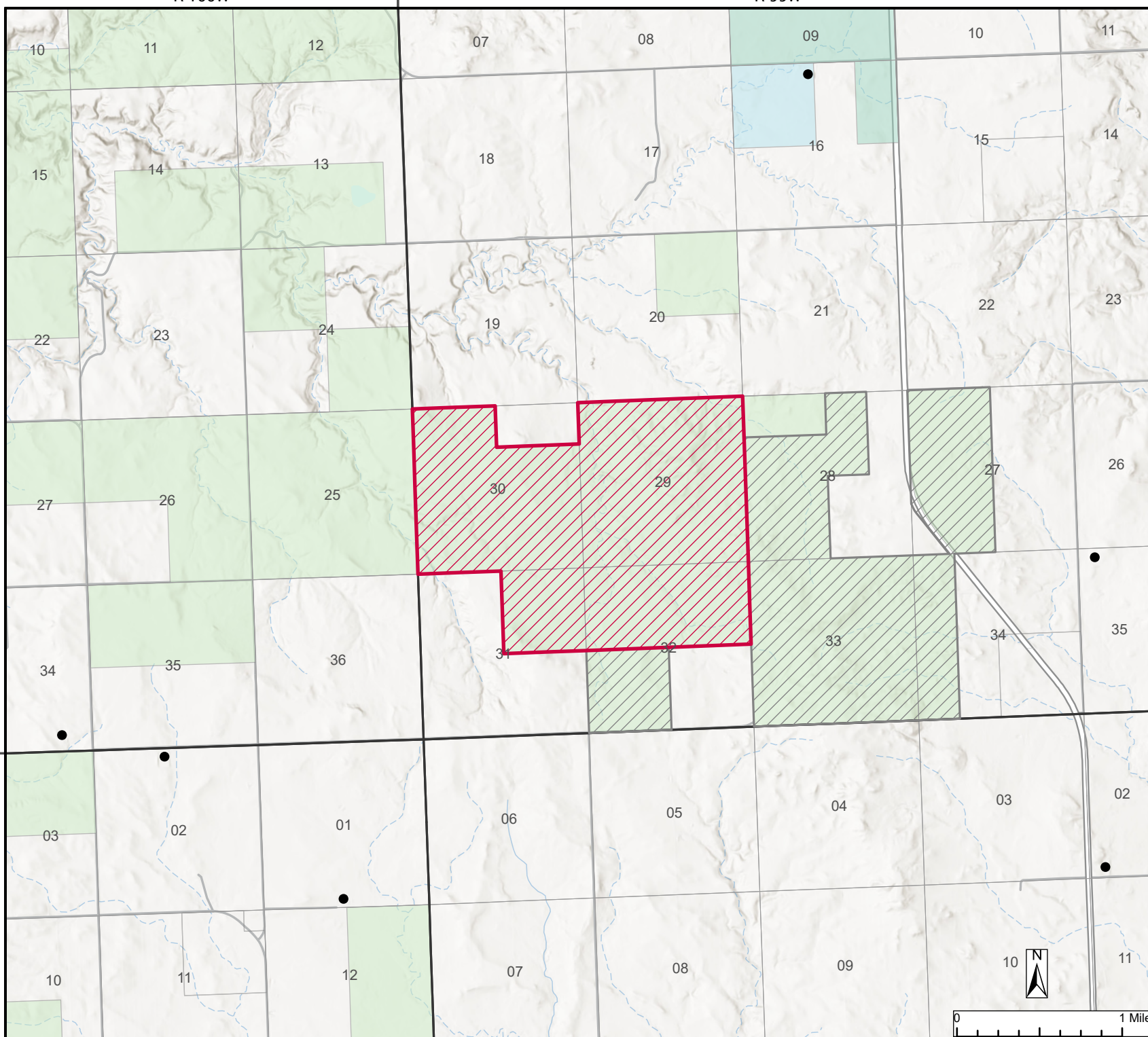
-  US Forest Service
-  State Lands
-  State Fish and Wildlife
-  Private

Map Page Location



T 143N

T 142N



R 100W

R 99W


**Bureau of Land Management
Montana Dakotas Competitive
Oil and Gas Lease Sale
April 29, 2025**




NOTE TO MAP USERS
No warranty is made by the Bureau of Land Management as to the accuracy, reliability, or completeness of the data layers shown on the map. The official land records should be checked for the current status on any specific tract of land.


**North Dakota Field Office
Billings County**

**Parcel Number
ND-2025-04-6825
160 Acres**

 **Lease Parcel
ND-2025-04-6825**

 **Other Lease Parcel**

Surface Well

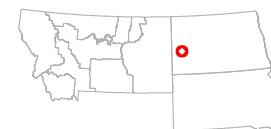
 **Oil or Gas**

Surface Management

 **US Forest Service**

 **Private**

Map Page Location



T 143N

T 142N

